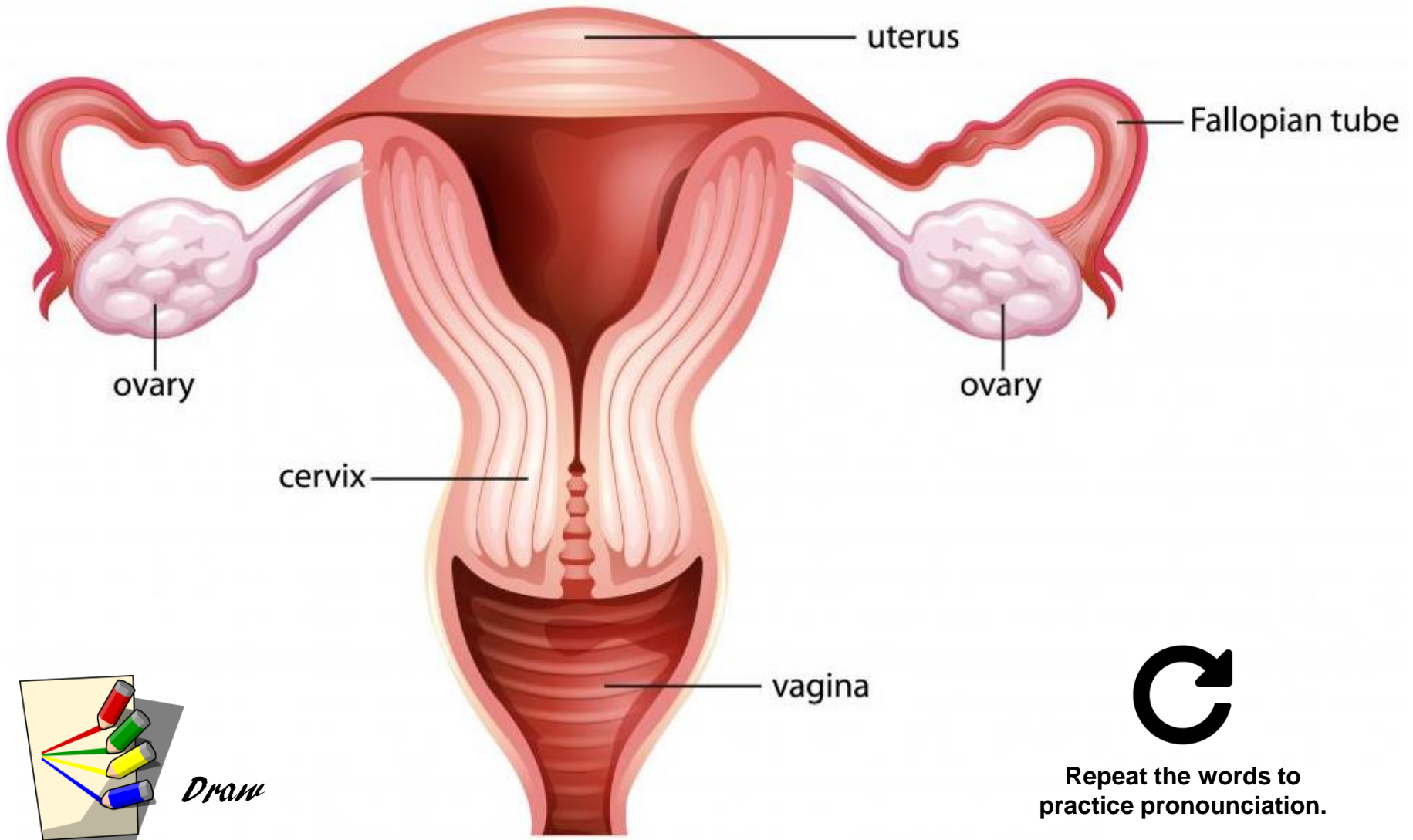


ANATOMY OF THE HUMAN REPRODUCTIVE TRACTS



Female Reproductive System

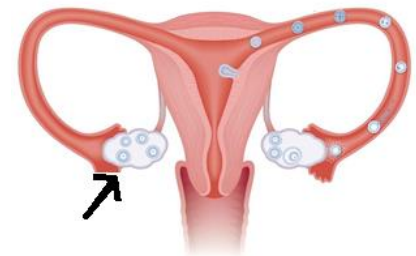


The structures

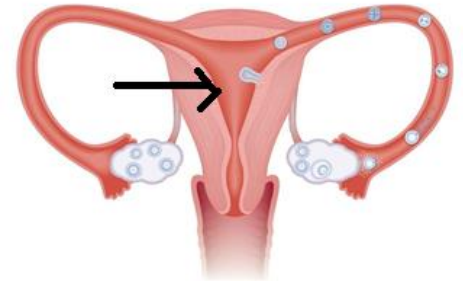
Oviduct is the tube through which egg cell travels to the uterus. Each ovary is connected to the uterus by an oviduct.



Ovaries the place where the eggs (female sexual cells) are stored in and released every month, after puberty.



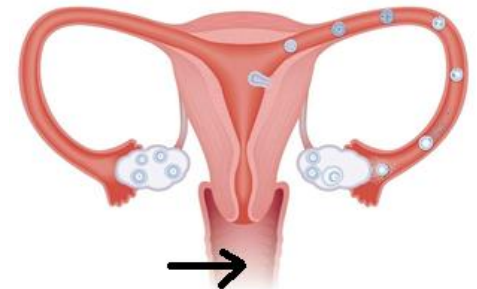
Uterus This bag is like an inverted pear, made up of muscle. Holds and protect The baby during pregnancy.



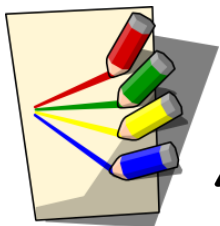
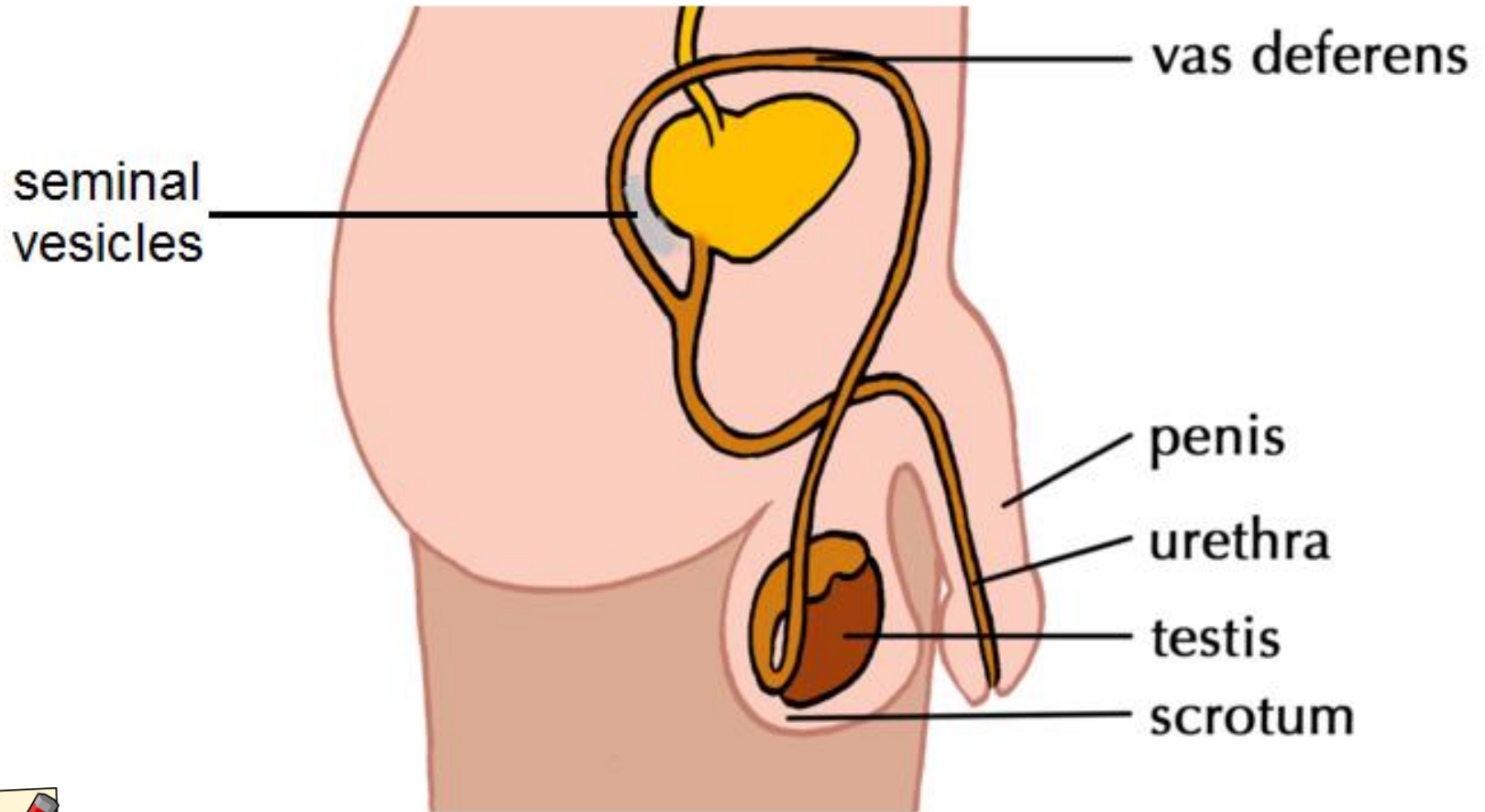
Cervix It forms a barrier between the uterus and the vagina. During birth, the cervix expands and the baby passes through it.



Vagina is an elastic, muscular canal that connects the cervix to the outside of the woman's body.



Male Reproductive system



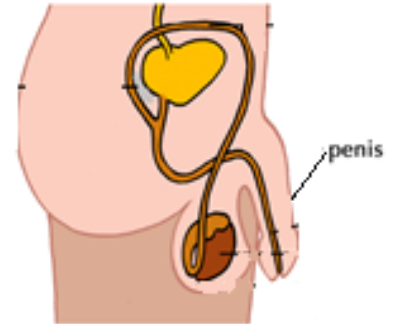
Draw



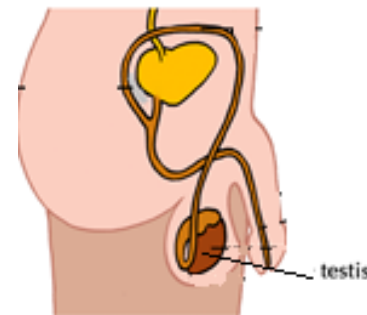
Repeat the words to practice pronunciation.

The structures

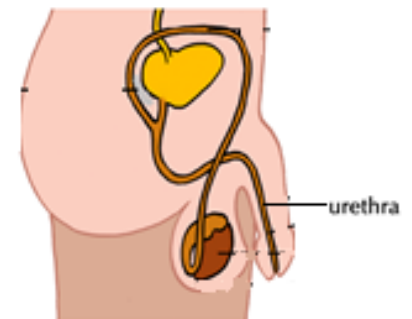
Penis reproductive and excretory organ



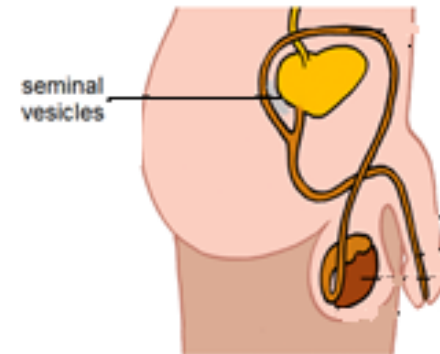
Testes produce millions of male cells called sperms.



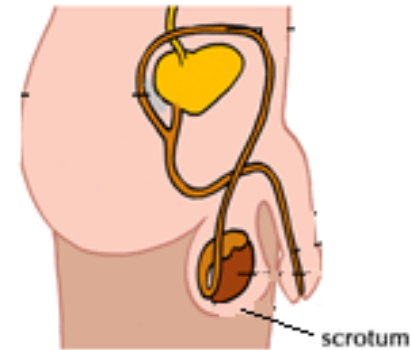
Urethra is the tube inside the male organ that carries urine or semen.



Seminal vesicles store fluids.



Scrotum sac that contains and protects the testicles.



Vas deferense transports fluids such as the urine.

